

Name: _____



Worksheet Seven (Fingerprint 3)

	Progression 1	
	Progression 2	
	Progression 3	
	Progression 4	

Examples from Bach Chorales

Example 1 (RM75, second phrase)

a) chords F:

b) seventh:

- Label the last four chords in the box provided with Roman numerals.
- The penultimate chord contains a seventh. What is unusual about it, and why can Bach not treat this dissonance as he has in the previous two fingerprints?
- Describe in detail the harmonic device used in the soprano part in this fingerprint.

Example 2 (RM136, third phrase, slightly simplified)

a) chords D:

b) harmonic device:

- a) Label the last four chords in the box provided with Roman numerals.
- b) Describe in detail the harmonic device used in the soprano part in this fingerprint.

Example 3 (RM87, final phrase)

a) chords c:

b) harmonic device in last chord:

- a) Label the last four chords in the box provided with Roman numerals.
- b) Describe the harmonic device used in the last chord
- c) What is weak about chord progression of the last beat of the first bar into the first of the second? (see harmonic DOs and DON'Ts)
- d) Many analysts would argue that this chord progression is not actually the one shown in your analysis. How does this improve the progression? (struggling? Google “cadential 6 4”)

Example 4 (RM3, fourth phrase, slightly simplified)

a) chords a:

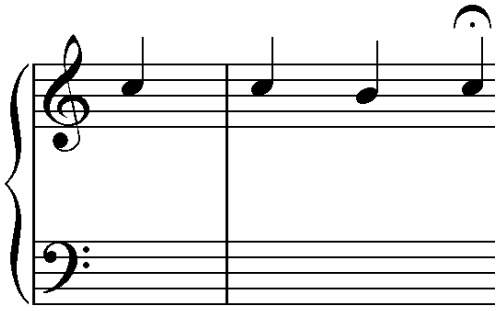
- a) Label the last four chords in the box provided with Roman numerals.
- b) Most of the fingerprints on this worksheet are interchangeable. Which chord progressions from the examples above could NOT be used to harmonise this cadence and why?

Exercises

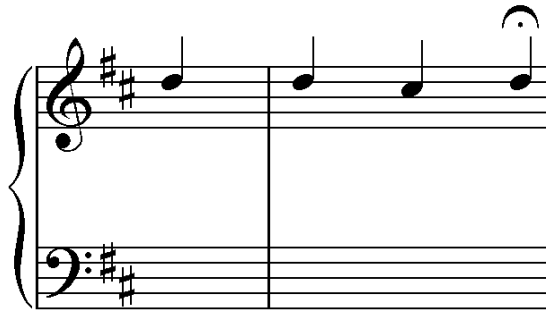
1

2

3



4



5



6



Common errors
General comments and tips