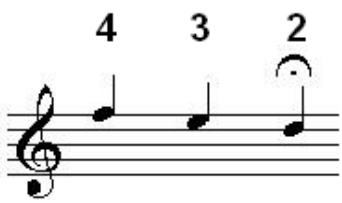
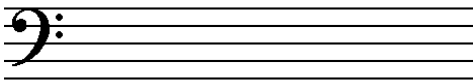


Name: _____

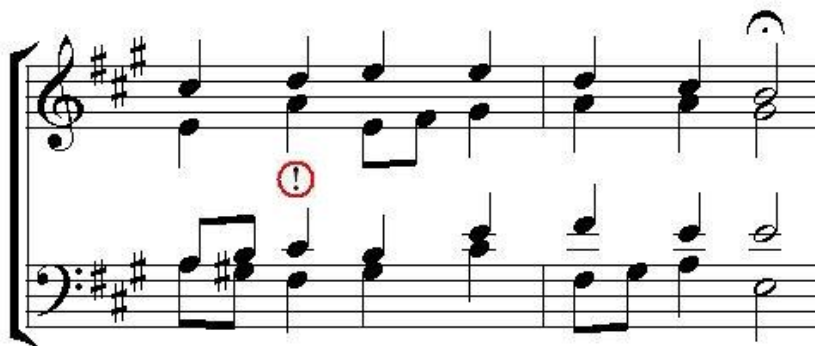


Worksheet Seventeen (Fingerprint 6)

	Progression 1	
	Progression 2	

Examples from Bach Chorales

Example 1 (RM233, first phrase)



a) chords C:

a) Label the three chords in the box provided with Roman numerals.

b) Why would this pattern work less well if the bass went up to the final E rather than down?

Example 2 (RM26, second phrase)

A musical score for a piano piece in E major, consisting of six measures. The first five measures show a sequence of chords: E major, E major, E major, E major, and E major. The sixth measure contains an E major chord with a grace note (embellishment) on the G4 note. An arrow points from a text box to this grace note.

c) What note of the chord is doubled here?

a) chord and embellishment:

b) chords E:

- a) Look at the first chord of the last bar. What sort of embellishment is this and what chord in E major does it decorate.
- b) Label the last three chords using Roman numerals
- c) What note of the chord is doubled at the beginning of the last bar?

Exercises

1

Exercise 1: A musical score in E major, 4/4 time. The right hand plays a melody of four quarter notes: G4, A4, B4, and C5. The left hand has a whole rest.

2

Exercise 2: A musical score in E major, 4/4 time. The right hand plays a melody of four quarter notes: G4, A4, B4, and C5. The left hand has a whole rest.

3

Exercise 3: A musical score in E major, 4/4 time. The right hand plays a melody of four quarter notes: G4, A4, B4, and C5. The left hand has a whole rest.

4

Exercise 4: A musical score in E major, 4/4 time. The right hand plays a melody of four quarter notes: G4, A4, B4, and C5. The left hand has a whole rest.